

SANIERUNG MITTELSCHULE TUTZING

bioplan
architekten



Stand 05.05.2023



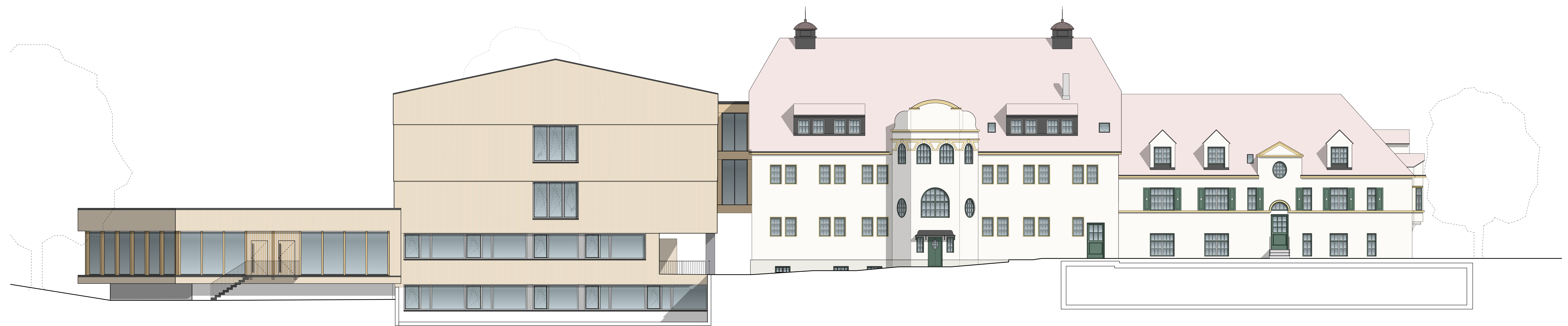
Visualisierung- Blick von Traubinger Straße





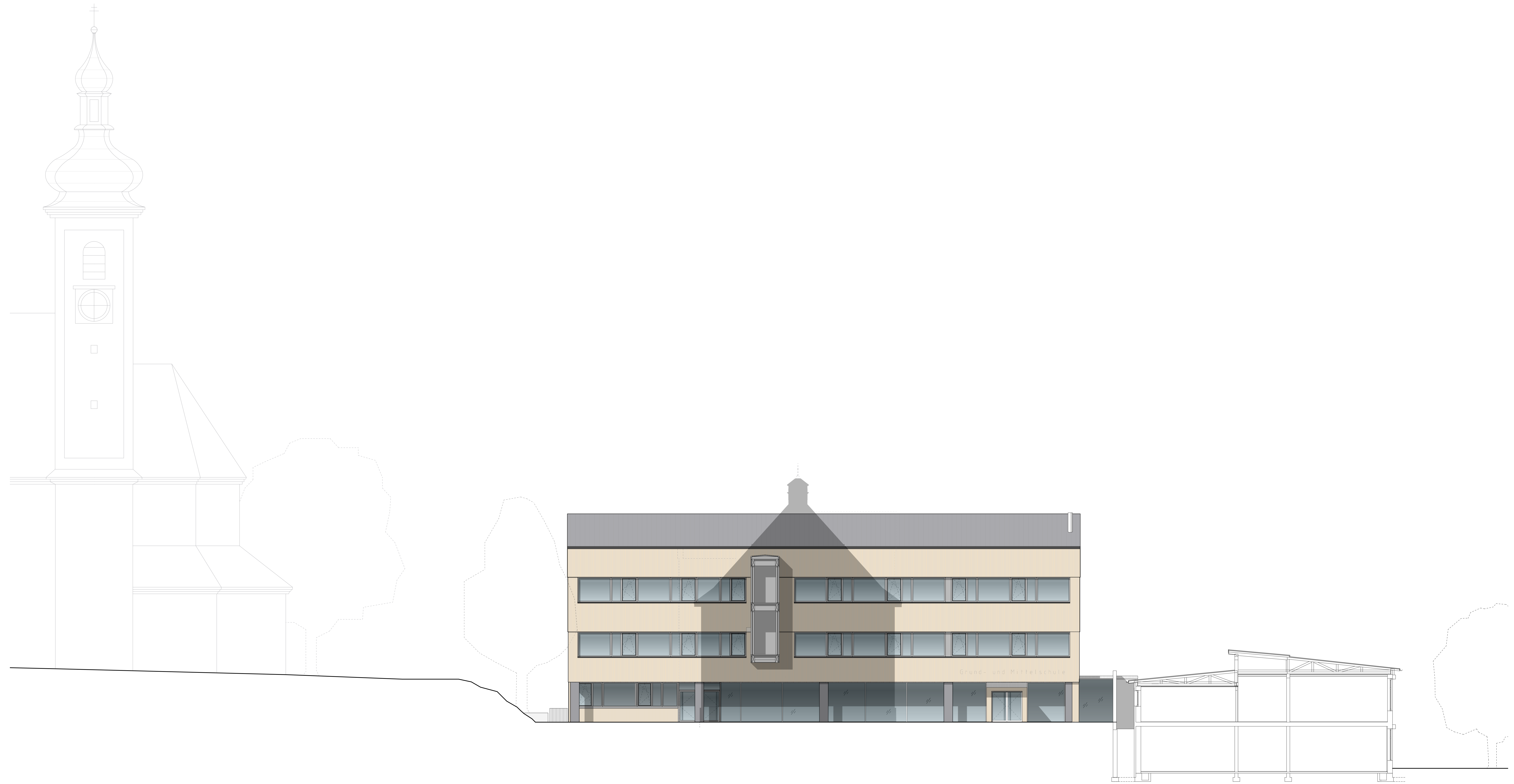
Ansicht Ost





Ansicht West





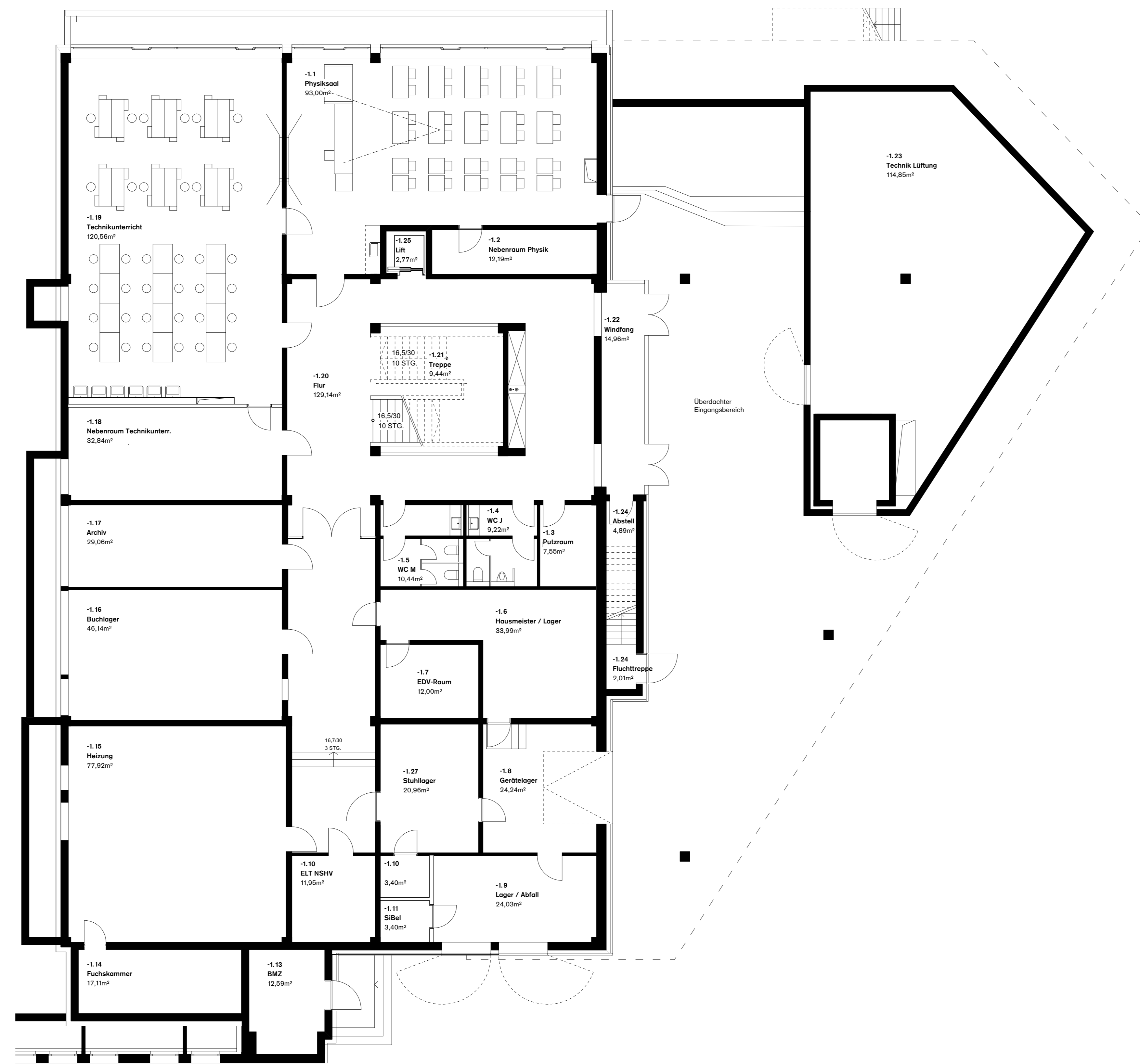
Ansicht Süd



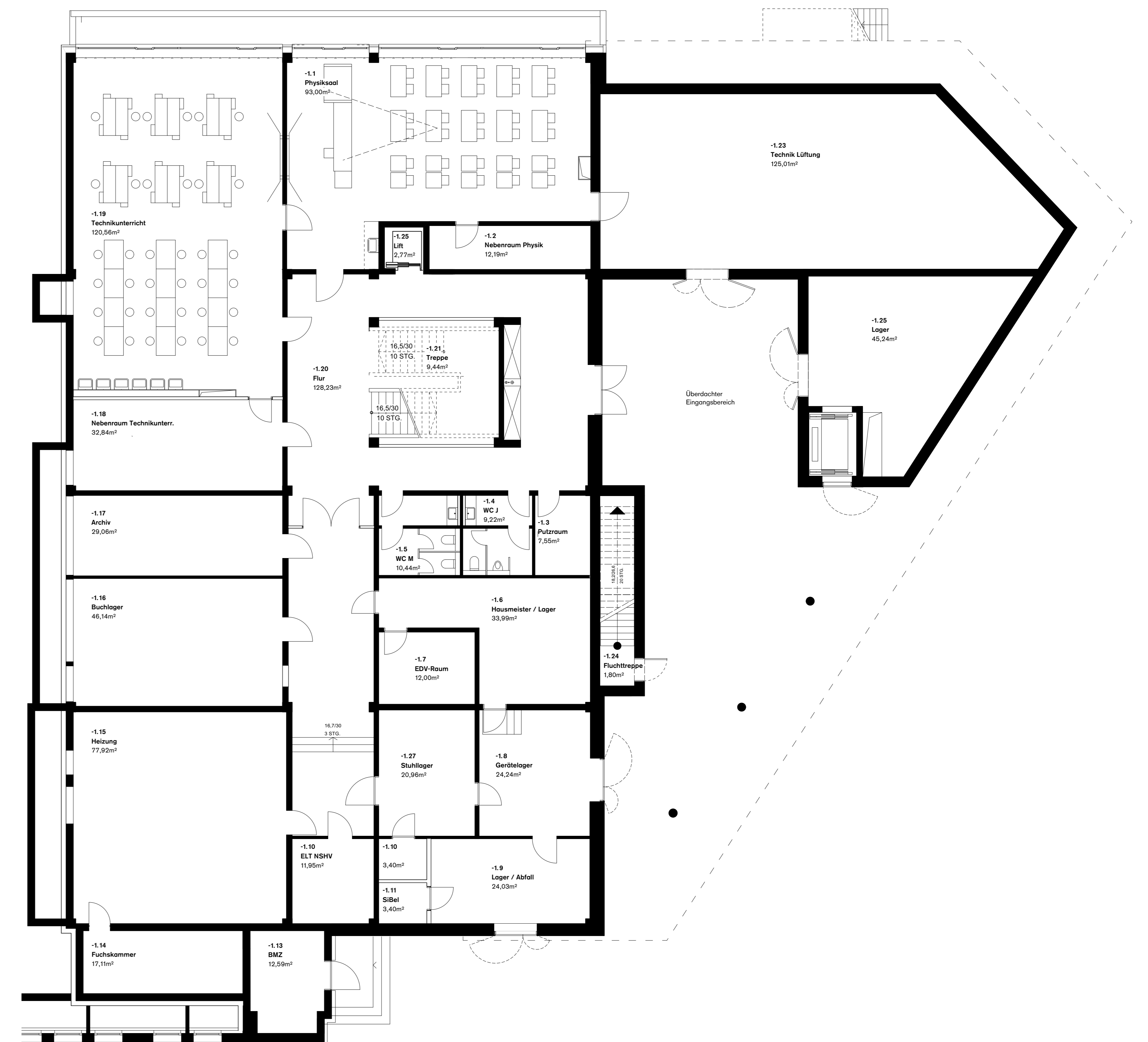


Ansicht Nord





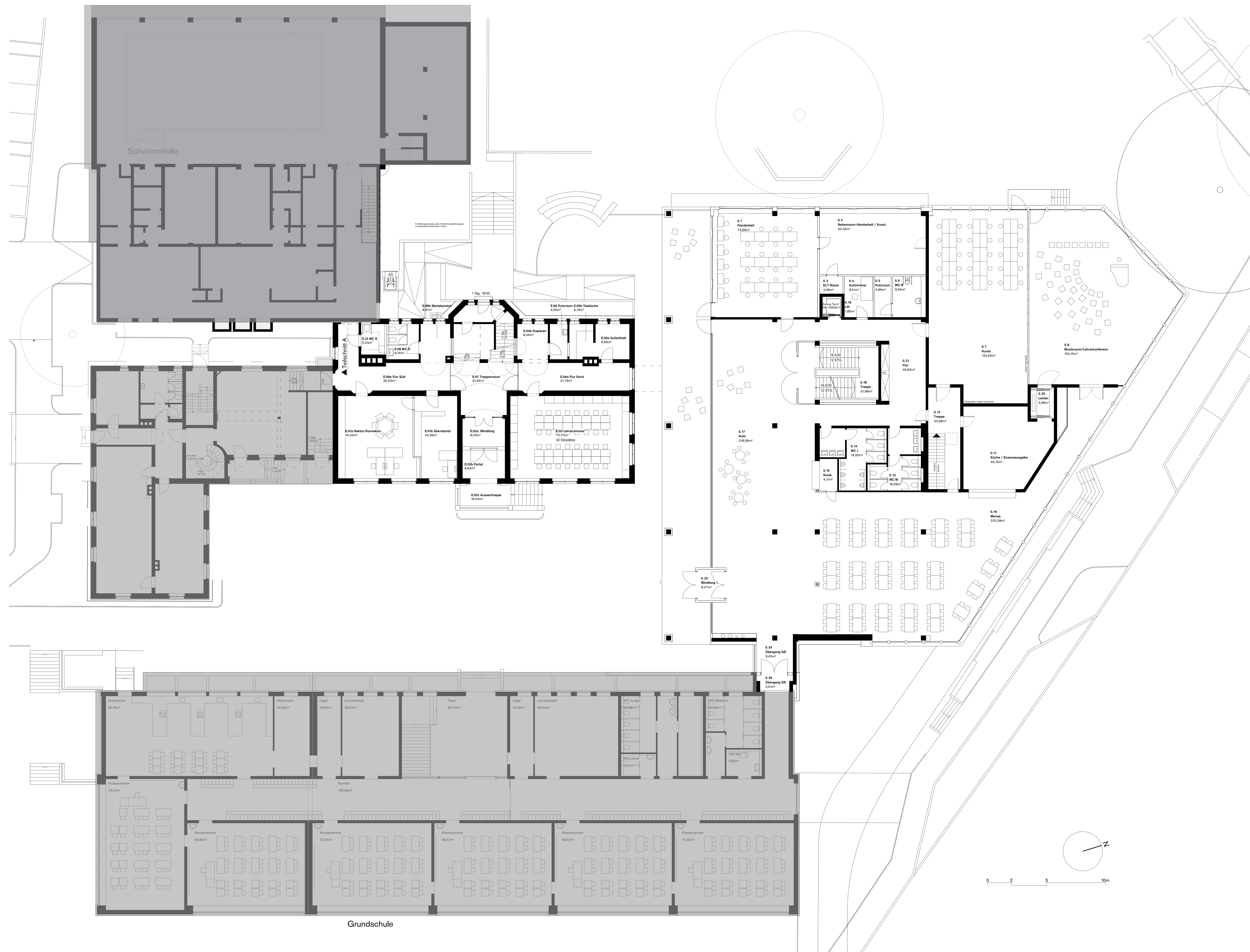
Genehmigungsstand



Neue Planung

Änderungen Grundriss Untergeschoss

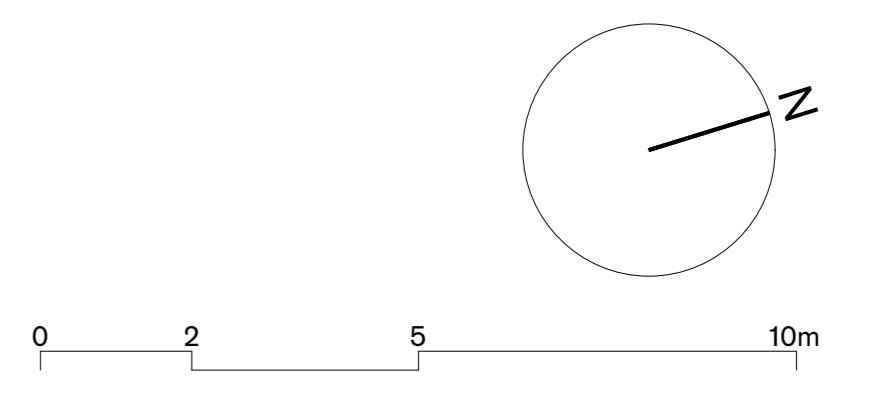


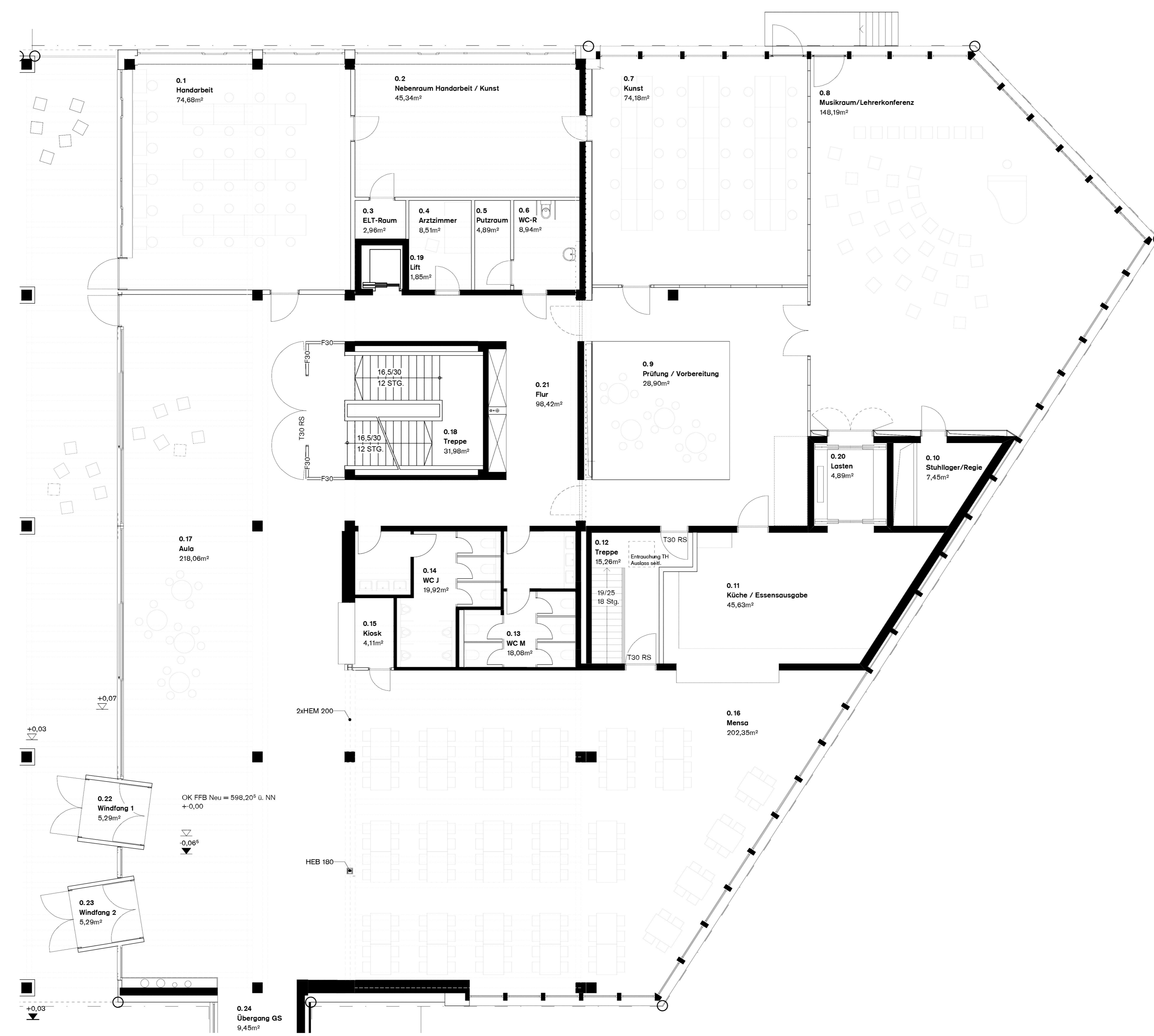


Grundriss Erdgeschoss

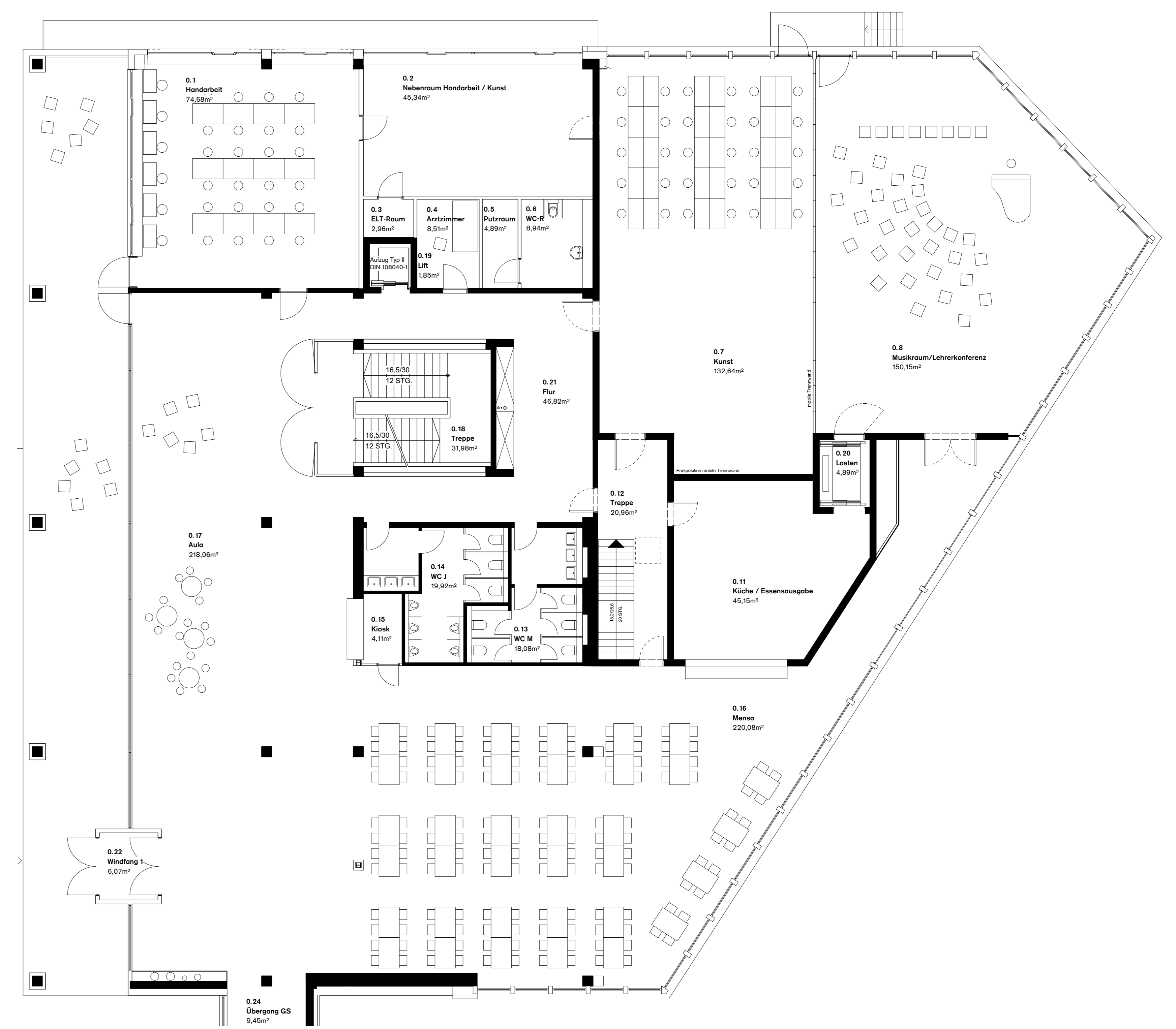


Grundschule





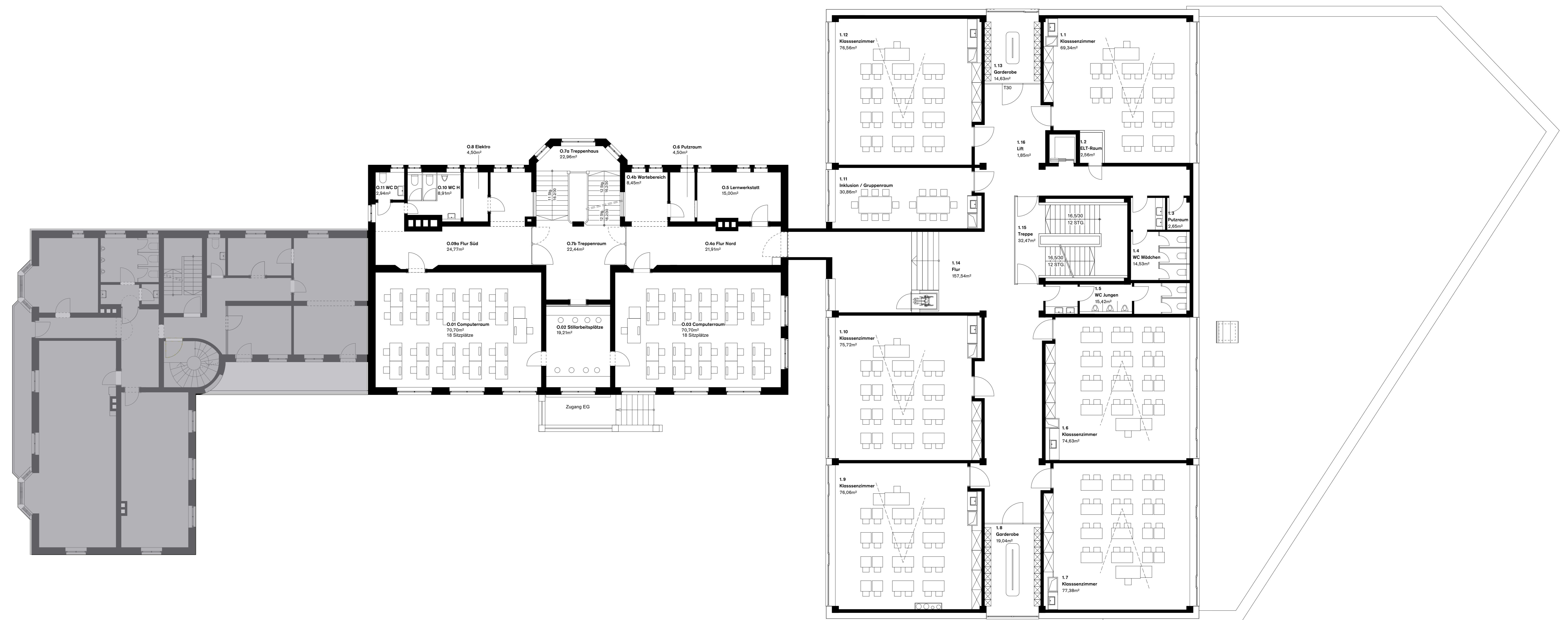
Genehmigungsstand



Neue Planung

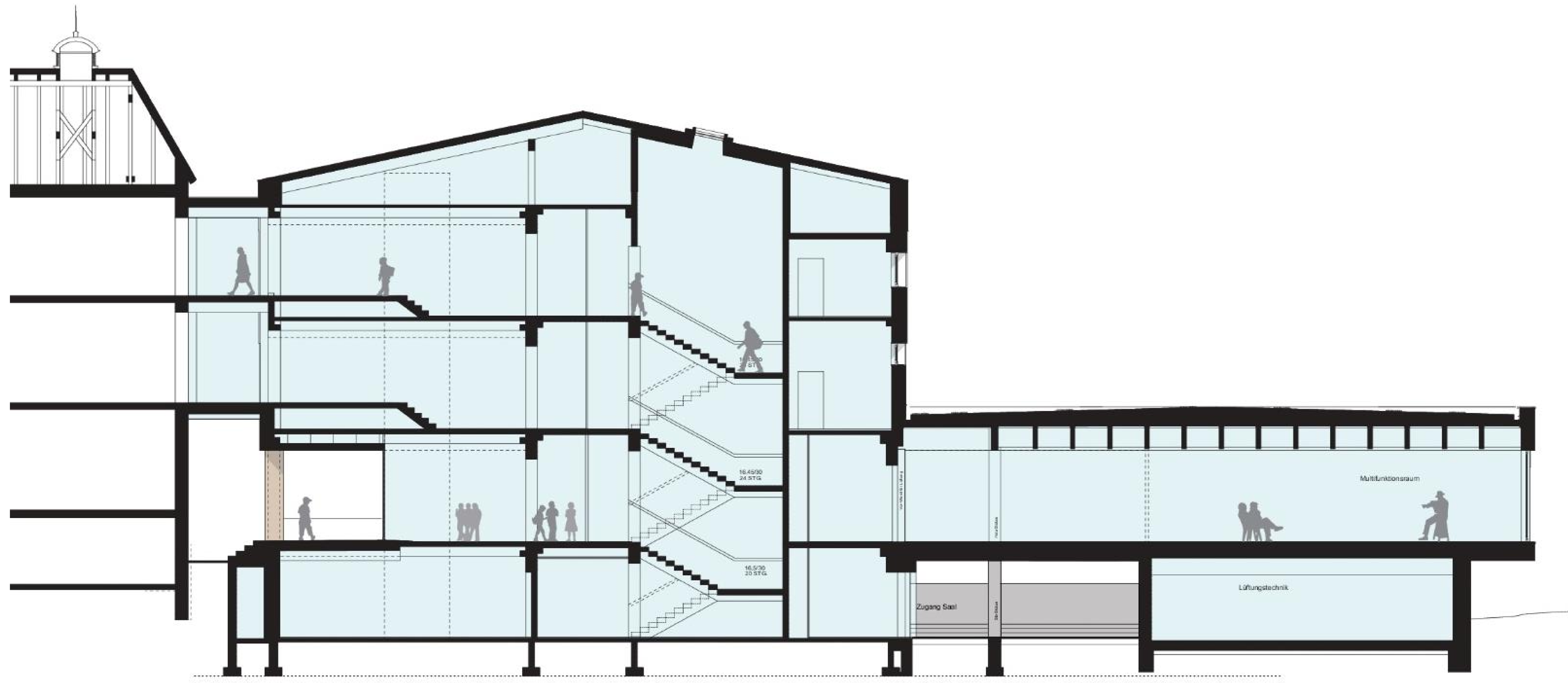
Änderungen Grundriss Erdgeschoss





Grundriss 1. Obergeschoss





0 2 5 10m

Querschnitt

